

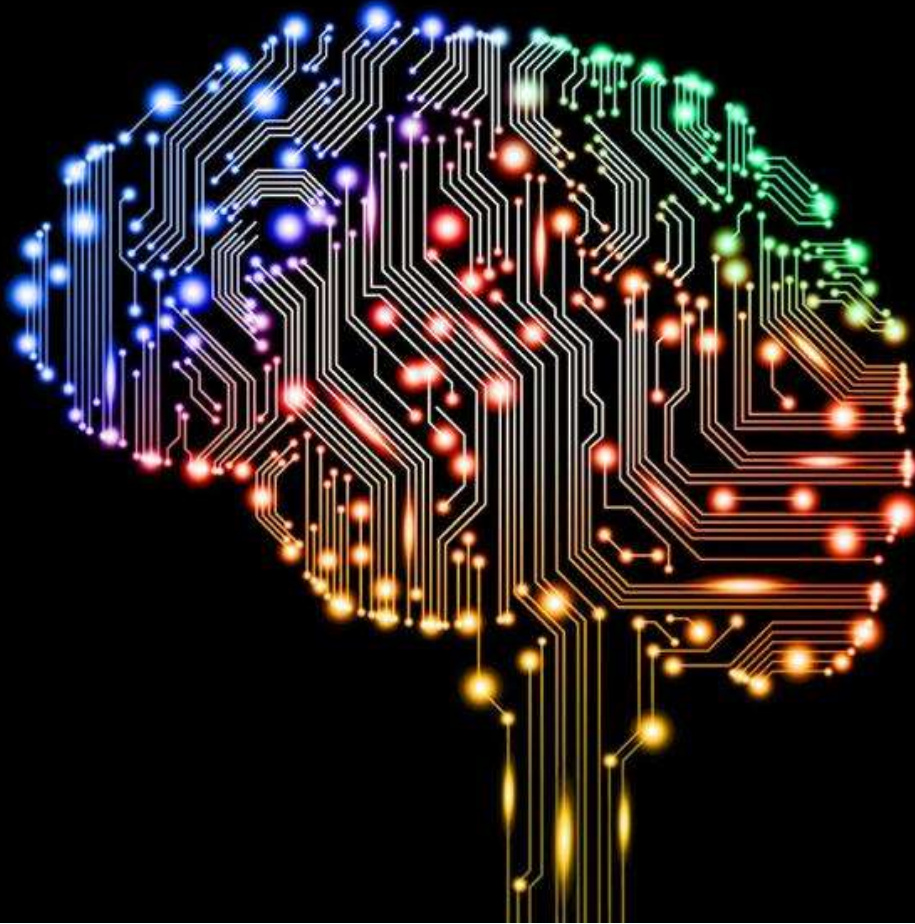


Global Governance of the Transition from Artificial Narrow Intelligence (ANI) to Artificial General Intelligence (AGI)

OECD Government Foresight Community Annual Meeting
11-13 October 2021

Jerome C. Glenn
CEO, The Millennium Project

Three Forms of Artificial Intelligence



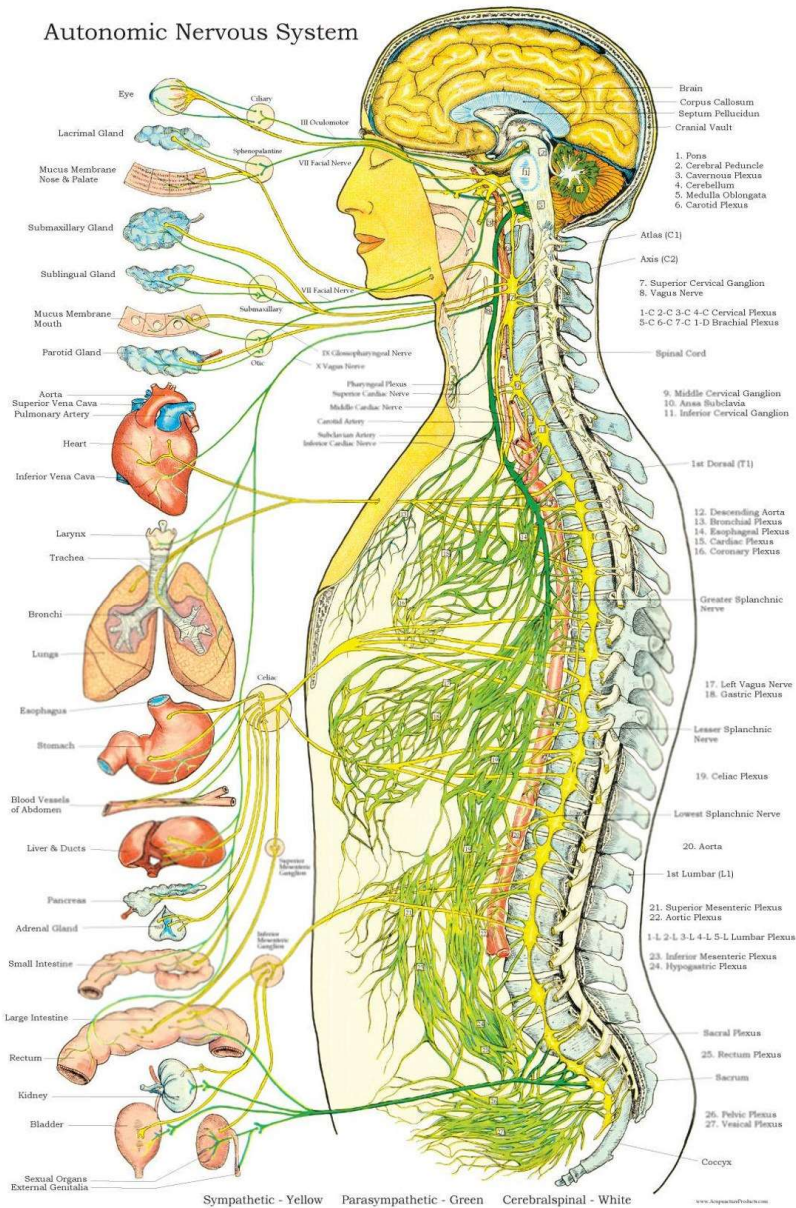
- **Artificial Narrow Intelligence**
- **Artificial General Intelligence**
- **Artificial Super Intelligence**

Artificial Narrow Intelligence (ANI) is often better and faster than humans at:



- Lip reading (LipNet; Deep Mind)
- Flying planes, driving trucks
- Mathematics
- Live voice translation (Microsoft)
- Playing games (Chess: Deep Blue, Jeopardy & Go: Alpha Go)
- Face recognition
- Medical diagnosis (IBM Watson - Cancer)
- Reading comprehension speed (Microsoft and Alibaba)
- Legal analysis (LawGeex)
- Income tax preparation (TurbTax)
- Organizing shipping (Amazon)
- Specific research (Google; Alexa)
- Traffic navigation (Google Maps)
- And AI/robots for repetitive tasks and large scale data analysis

Autonomic Nervous System



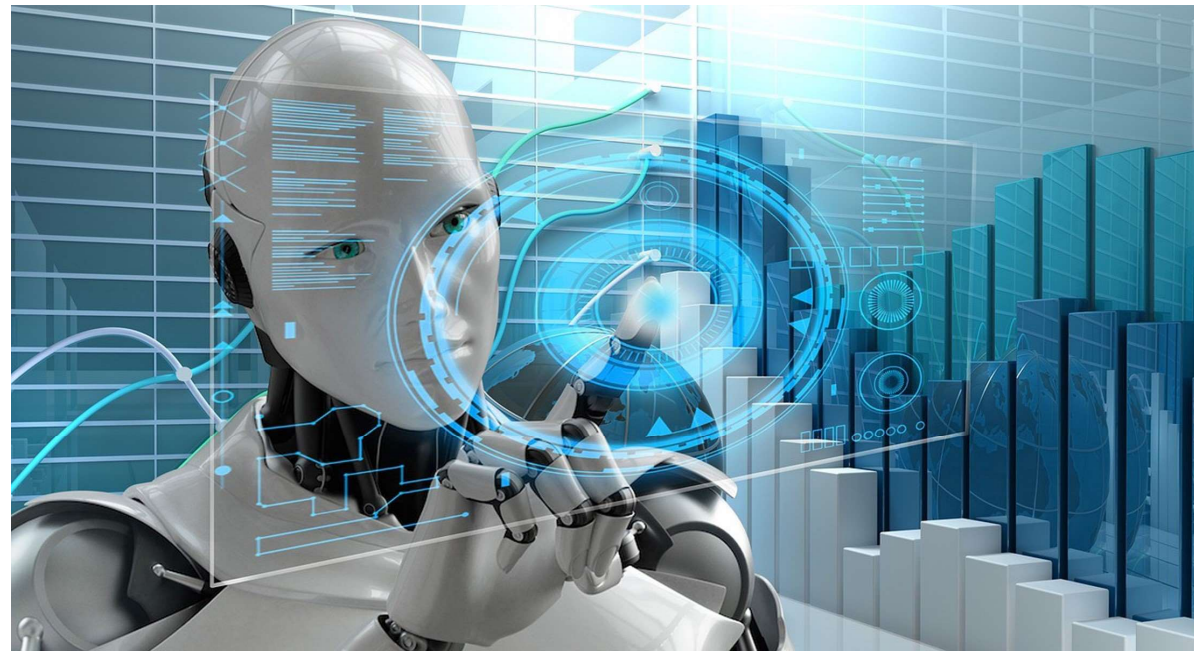
Autonomous Nervous System & Civilization



Just as the autonomous nervous system runs much of our body, freeing the mind to be creative;

AI and other Next Technologies (NT) will run much of the physical infrastructure of future civilization freeing more of humanity to be creative.

Artificial General Intelligence



Who ever leads AI... rules the world - Putin



China Goal: Lead the World in AI by 2030



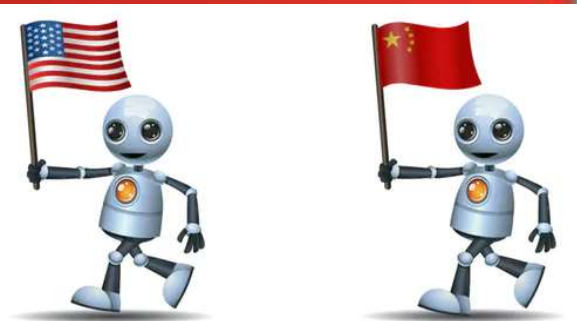
Human Brain Projects:

USA, EU, China

Artificial Brains:

IBM, Google, Facebook, Baidu,
Microsoft, Alibaba, Apple, Amazon

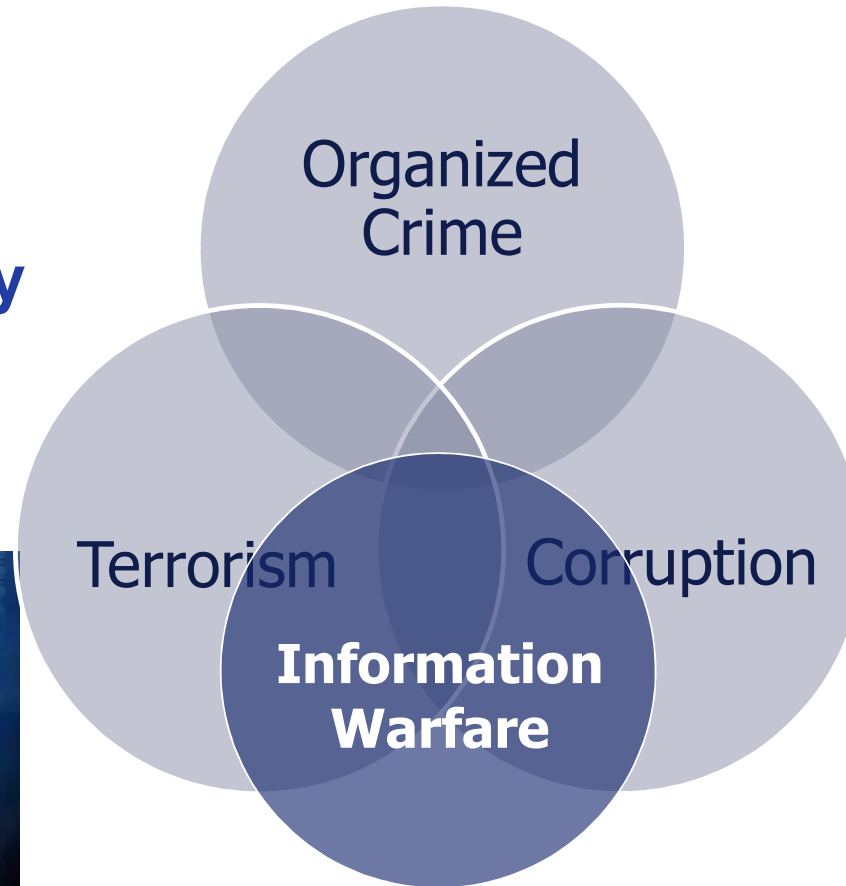
The Great Brain Race is on!



**These Technologies Could Also Make
This Combination Far More Powerful...**



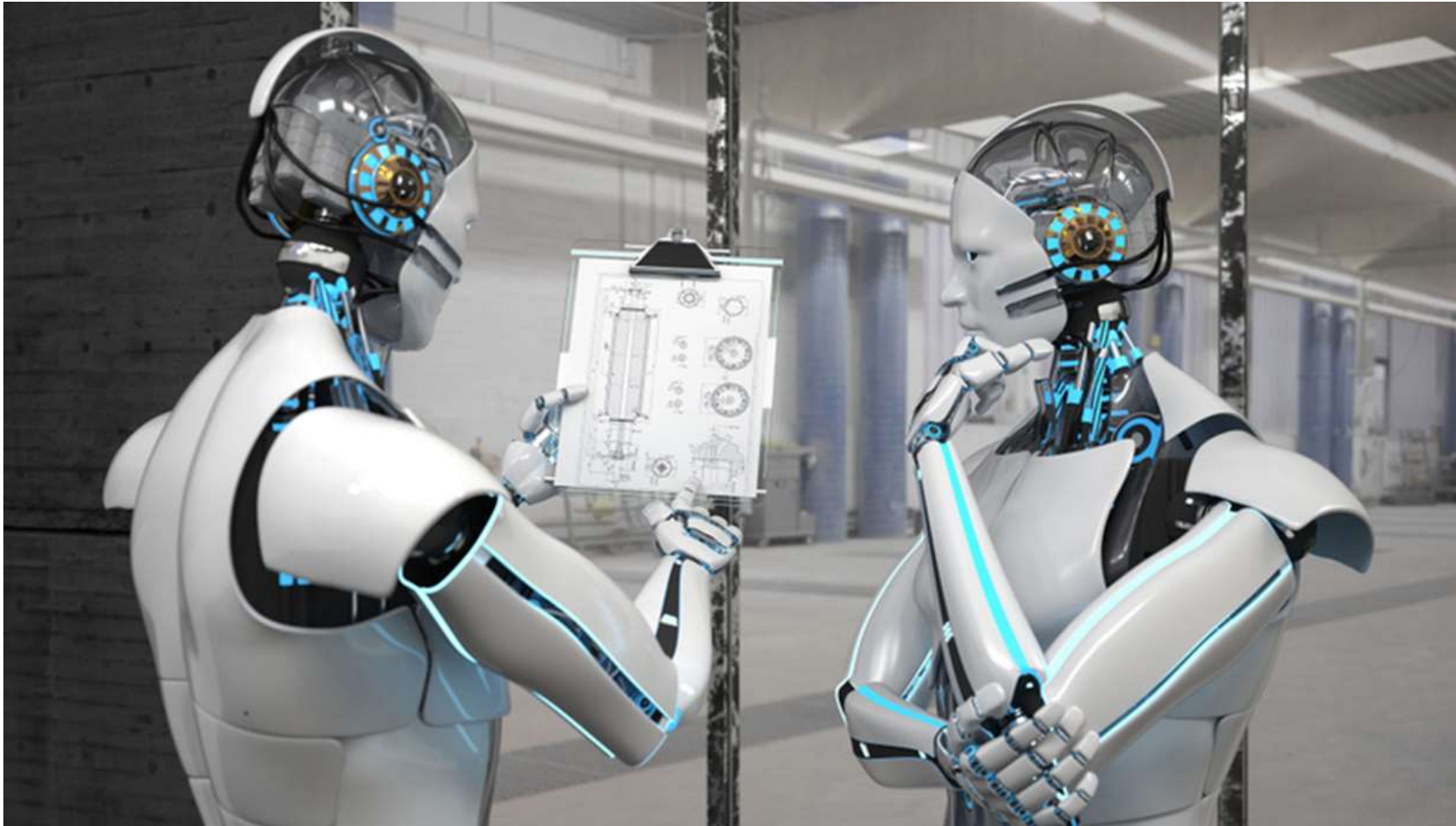
**...Making Democracy
and Free Markets...**



...An Illusion



Artificial Super Intelligence sets its own goals independent of human awareness and understanding



If we don't get the initial conditions “right”



for AGI, then Artificial Super Intelligence could evolve quickly beyond our understanding.

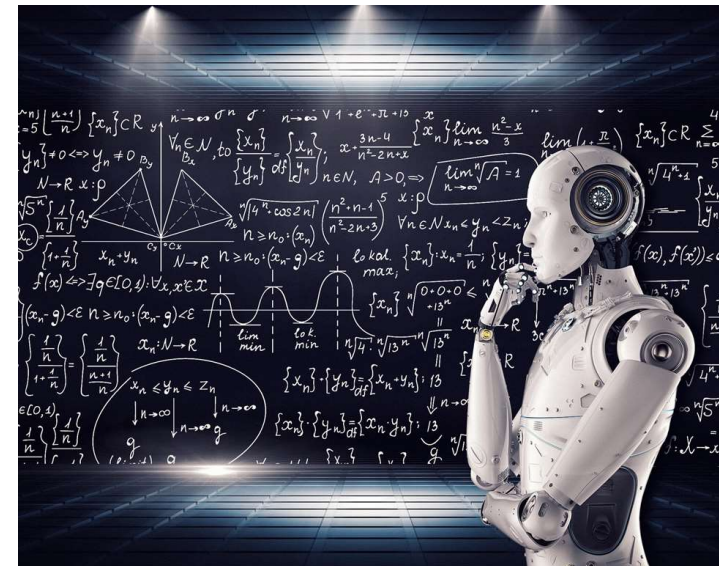


ANI – AGI Global Governance



- It is argued that creating rules for governance of AI too soon will stifle its development.
- Some AGI experts believe it is possible to have AGI as soon as 10 years.
- Since it is likely to take ten or more years to
 - ✓ develop ANI to AGI international agreements
 - ✓ design an international governance system
 - ✓ And begin implementation

Then it is wise to begin exploring global governance approaches **now**.



Some Potential Governance Models



1. IAEA-like model or WTO-like with enforcement powers
2. IPCC-like model in concert with international treaties
3. International S&T Organization (ISTO) as an online real-time global collective intelligence system; governance by information power
4. GGCC (Global Governance Coordinating Committees) flexible but enforced by national sanctions, ad hoc legal rulings in different countries, and insurance premiums
5. ISO and IEEE standards affecting international purchases
6. Put different parts of AGI governance under different bodies like ITU, WTO, WIPO
7. TransInstitution

Humanity needs to think together about how to govern the transition from ANI to AGI:



**This is a key test
of our age.**



The Millennium Project
is preparing an
international study of
global models to
govern this transition

If interested, contact: Jerome.Glenn@Millennium-Project.org

For further information



Info@Millennium-Project.org

***Work/Technology 2050:
Scenarios and Actions***

<https://www.millennium-project.org>